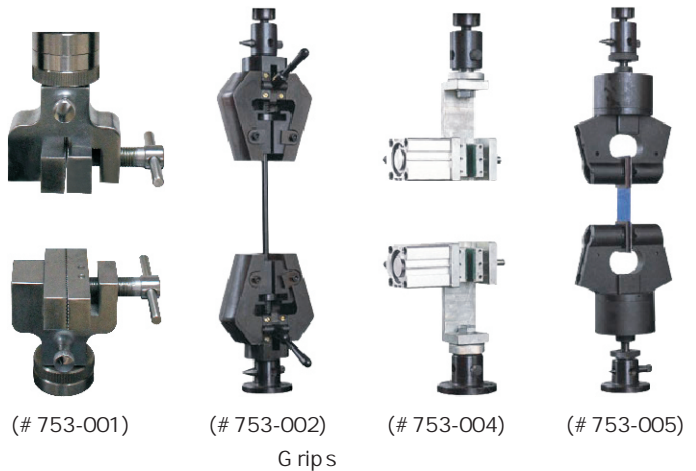




SK-100(# 750-171)

**Application:**

SK Series Tensile tester is suitable for physical test of various small pieces of materials, finished products, semi-finished product specimen, available for conduct tensile strength, anti-compression, anti-bending, tearing, peeling, adhesion, piercing and other tests with various grips and fixtures.



(# 753-001) (# 753-002) (# 753-004) (# 753-005)  
Grips

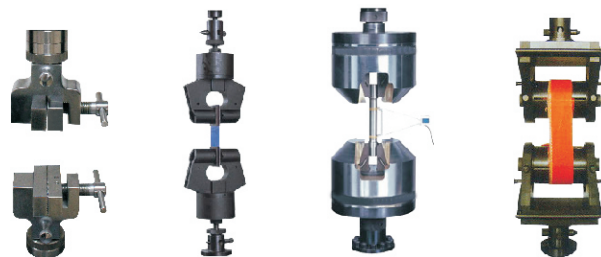
Specification	SK-1	SK-2	SK-5	SK-10	SK-20	SK-50	SK-100
Order#	750-111	750-121	750-131	750-141	750-151	750-161	750-171
Max. Capacity	10N	20N	50N	100N	200N	500N	1000N
Display	LCD display						
Force Resolution	1/25,000						
Force Accuracy	± 0.5%						
Stroke Resolution	0.005mm						
Test Stroke	500mm						
Test Width	Ø 55mm						
Test Speed	25-300mm/min, adjustable						
Force Unit Switch	Kg, N, LB						
Stop Mode	Overload stop, emergency stop button, specimen damage automatic stop, upper & lower limit set automatic stop						
Machine Dimension	650× 260× 1050mm(W× D× H)						
Machine Drive	AC motor						
Power	120W						
Machine Weight	Approx 45kg						
Power Supply	AC 220V /50-60Hz/3A						
Standard Delivery	Instrument, Grip (# 753-001), DRO (# 754-001)						
Optional Accessories	Grips, Printer						



ST-500 (# 751-191)

### Application:

This tester is designed for conduct tensile, compression, bending, shearing, bonding strength, peeling, tearing and other tests for rubber, plastic, leather, metal, nylon line, fabric, paper, aviation, packaging, construction, petrification, electrician, vehicle and other materials. It is a basic equipment of quality control, receiving inspection, physical test, mechanics research, material development.



Grips

Specification	ST-1	ST-2	ST-5	ST-10	ST-20	ST-50	ST-100	ST-200	ST-500
Order#	751-111	751-121	751-131	751-141	751-151	751-161	751-171	751-181	751-191
Max. Capacity	10N	20N	50N	100N	200N	500N	1KN	2KN	5KN
Display	Computer display mode								
Force Resolution	1/500,000								
Force Accuracy	± 0.5%								
Stroke Resolution	0.005mm								
Control Mode	All computerized operation mode								
Test Stroke	800mm, 1000mm (Optional)								
Test Width	Ø 140mm								
Test Speed	0.1~500mm/min, can set by computer, with up & down fast adjustment button of grips								
Force Unit Switch	Kgf, N, lbf, g, ton, Mpa								
Stop Mode	Overload stop, emergency stop button, specimen damage automatic stop, upper & lower limit set automatic stop, automatic reset function								
Machine Dimension	500× 520× 1420mm (W× D× H)								
Machine Drive	Servo motor drive, synchronous wheel and precision ball screw drive								
Power	400W								
Machine Weight	Approx 75kg								
Power Supply	AC 220V /50Hz/10A								
Standard Delivery	Instrument, Grip (# 753-001), Measuring Software: Tester								
Optional Accessories	Grips, PC								





SG-001(#753-001)  
Max load:50KN  
Usage: Challis, braided fabric, tensile experiments



SG-002(#753-002)  
Max load:30KN  
Usage: All kinds of metal and non-metal materials tensile experiments



SG-003(#753-003)  
Max load:300KN  
Usage: All kinds of metal and non-metal materials tensile experiments



SG-004(#753-004)  
Max load:0.5KN  
Usage: Plastic, thin film, leather etc. tensile experiments



SG-005(#753-005)  
Max load:1KN  
Usage: Plastic, thin film, leather etc. tensile experiments



SG-006(#753-006)  
Max load:3KN  
Usage: Silk, thread, rope and metal wire etc. tensile experiment



SG-007(#753-007)  
Max load:600KN  
Usage: All kinds of metal and non-metal materials tensile experiments



SG-008(#753-008)  
Max load:5KN  
Usage: Engineering Plastics, strength of wood tensile experiments



SG-009(#753-009)  
Max load:1KN  
Usage: Thin film, paper and leather etc. tensile experiments



SG-010(#753-010)  
Max load:2KN  
Usage: challis, braided fabric, tensile experiments



SG-011(#753-011)  
Max load:3KN  
Usage: Cloth, woven materials tensile and peeling experiment



SG-012(#753-012)  
Max load:20KN  
Usage: safety rope, steel hook, go-between tensile experiments



SG-013(#753-013)  
Max load:200KN  
Usage: 200mm broadband tensile experiments



SG-014(#753-014)  
Max load:5KN  
Usage: All kinds of wire and thread tensile experiments



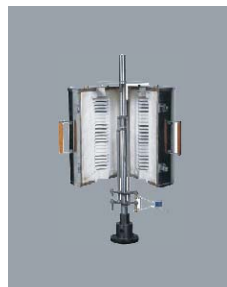
SG-015(#753-015)  
Max load:5KN  
Usage: Silk, thread, rope and metal wire etc. tensile experiment



SG-016(#753-016)  
Max load:300KN  
Usage: All kinds of material compression experiments



SG-017(#753-017)  
Max load:30KN  
Usage: All kinds of material compression experiments



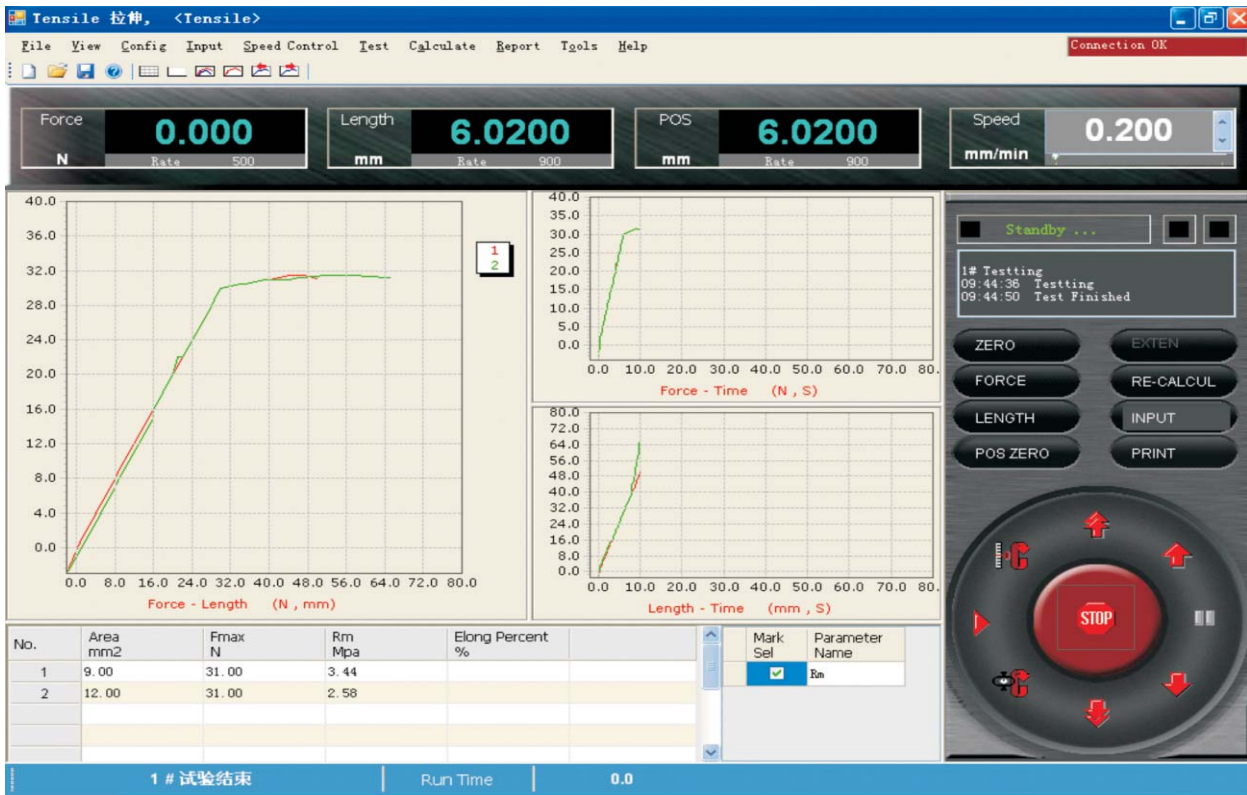
SG-018(#753-018)  
Max load:100KN  
Usage: All kinds of material high temperature performance experiments



SG-019(#753-019)  
Max load:300KN  
Usage: All kinds of material three points bending experiments

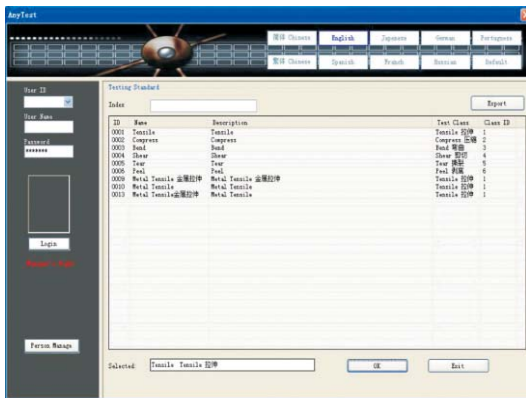


SG-020(#753-020)  
Max load:20KN  
Usage: Geotextile bursting strength experiment



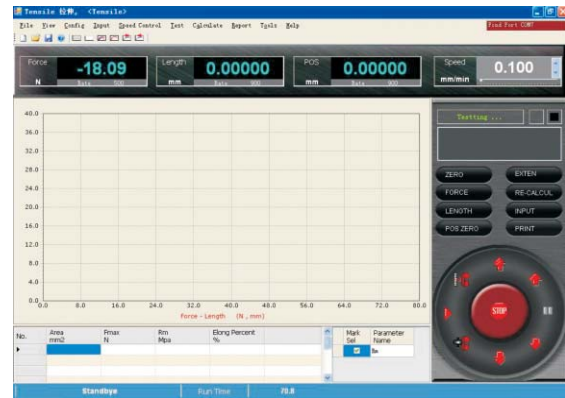
**Software Function:**

Test & Control System is designed for PC Electronic Universal Testing Machines, PC Hydraulic Universal Testing Machines and PC Compression testers; can conduct tensile, compression, bending, shearing, tearing and peeling test; use PC and interface board for data collection, preservation, processing and printing test result; can calculate max force, yield strength, average peeling force, max deformation, yield point, elastic modulus and other parameters; can conduct curve graphics processing, multi-sensor support, video and image interface, flexible data processing, MS-ACCESS database support, making more powerful function of system. Software Protection: over stroke, over capacity protection.



**Main interface:**

In this main interface, where you can select the language and testing standards, it includes 10 languages and 7 test standards.

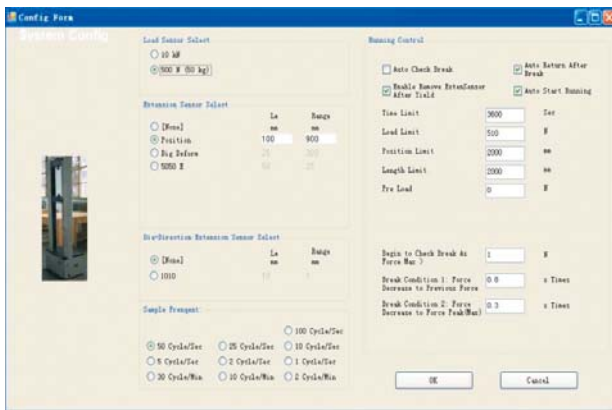


**Main form:**

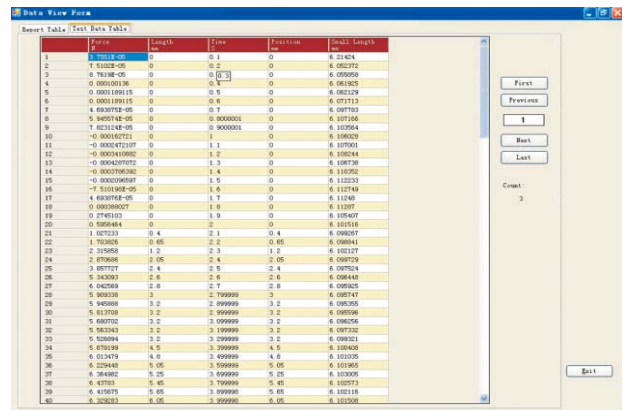
The main form includes menu bar, shortcut key bar, real-time value display, curve chart display, result display, state display, information display and key parts;

### Features

- Image interface: It's convenient for operation and can be reduced the misoperation through voice prompt to promote the reliability.
- MS-ACCESS database technology and SQL technology: It can standardize the saving and processing of data to facilitate the connection with Intranet or Internet; and the connection with Office software as Word or Excel; besides, the user can read the original testing data through standard database.
- Modularized program designing: Crystal Reporter report system and expanded customized report of VBScript and automatic calculation function of parameters can implement secondary development of users, so it can realize other testing functions excluding for tension, compression, tearing, peel and shear provided by software package.
- Function of curve chart: The real-time curve chart and coordinate axes of the chart can be selected the parameter's type, theoretically, there are 169 types of curve charts, which can display the parameters.
- Multi-sensor support: It can support 5 force sensors, 5 deformed sensors + large deformation + displacement, which substantially expand the testing range.



System config



Curve chart



Data report