

Accessories of Hardness Tester

Hardness Block:

The hardness blocks are mainly applicable to test the accuracy and calibrate the different hardness testers. Hardness blocks are produced and provided in scale of Rockwell, Superficial Rockwell, Brinell, Vickers, Micro Vickers, Leeb and Hammer Brinell, etc.

Conform to standard: ASTM & ISO;

Calibration certificate from Chinese Metrology Bureau is optional available.



Hardness Testing Block

Specification:

Hardness block	Technical Specification	Dimension
Rockwell	(28-88)HRA; (85-100)HRB; (20-33)HRC	Ø60x10mm
Superficial Rockwell	HR15N; HR30N; HR45N; HR15T; HR30T; HR45T	Ø60x10mm
Brinell	HBW 10/3000; HBW 5/750; HBW 10/1000; HBW 5/250	Ø90x15mm
	(150-600)HBW 2.5/187.5 (75-125)HBW 2.5/62.5	Ø64x12mm
	(150-500)HBW 5/750 (150-500)HBW 5/3000	12x12x15mm 14x14x15mm
Vickers	(150-750)HV5; (150-750)HV10; (150-750)HV30	Ø60x10mm
Micro Vickers	(200-300)HV0.05; (200-300)HV0.1; (300-400)HV0.15; (400-500)HV0.2; (700-800)HV0.2; (700-800)HV0.5; (700-800)HV1	Ø25x5mm
Leeb	(490-570)HLD; (590-670)HLD; (750-830)HLD	Ø90x55mm
Leeb G model	(460-540)HLG; (550-630)HLG	Ø120x70mm



Cone Diamond Indenter
(#811-401)



55mm V-shape anvil
(#811-511)



15mm Flat anvil
(#811-521)



150mm Flat anvil
(#811-541)



10mm, 5mm, 2.5mm Brinell
Ball Indenter
(#821-431/421/431)



Mini-Printer
(#821-831)



20x Brinell Digital Microscope
(#831-221)



20x Brinell Mechanic Microscope
(#831-221)



X-Y Anvil
(#823-701)



Leeb Hardness Tester
Optional Mini-printer
(#852-830)



Optional Working Cupboard
(#811-941)



Optional Accessories of Hardness Tester



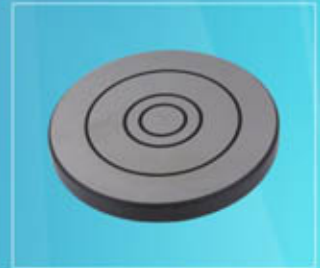
Indenter Protector
(#411-491)



$\text{Ø}1/16''$, $\text{Ø}1/8''$, $\text{Ø}1/4''$, $\text{Ø}1/2''$
Rockwell Ball Indenter
(#811-411/431/451/471)



Small Flat Anvil
(#811-501)



100mm Flat Anvil
(#811-531)



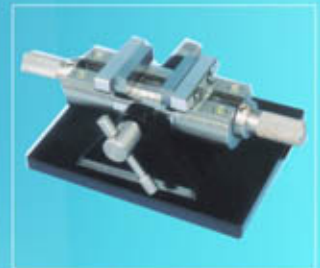
Flat Precision Clamp
(#823-711)



Thin-piece Clamp
(#823-751)



Filament Clamp
(#823-761)



Unequal Specimen Clamp
(#823-743)



Digital X-Y Anvil
(#823-711)



16x Digital Eyepiece
(#823-351)



Vickers Measuring Camera
(#823-811)



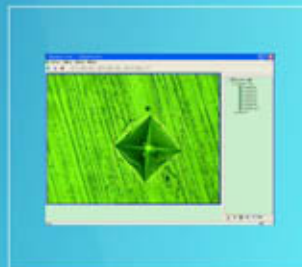
Vickers Display Monitor
(#823-821)



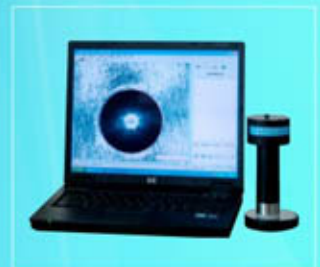
CCD Camera and Capture Card
(#484-132/527-131)



Vickers CCD Adapter
(#823-361)



Vickers Measuring Software
(#823-381)



Brinell Measuring System
(#831-341)

Note: All information regarding our products, and in particular the illustrations, drawing, dimensional and performance data contained in this catalogues, as well as other technical data are to be regarded as approximate average value. We therefore reserve the right to make changes to the corresponding designs, dimensions and weights. The stated standards, similar technical regulations, descriptions and illustrations of the products were valid at the time of printing. In addition, the latest applicable version of our general trading conditions will apply. Only quotations submitted by ourselves may be regarded as definitive.